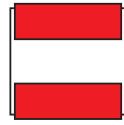
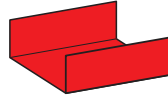


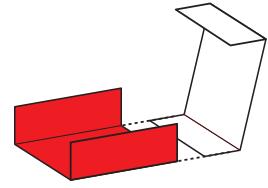
1. Lay one business card across another, centered and at right angles to the first.



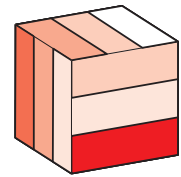
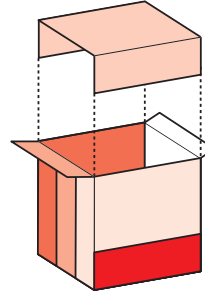
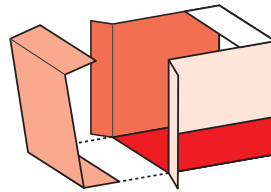
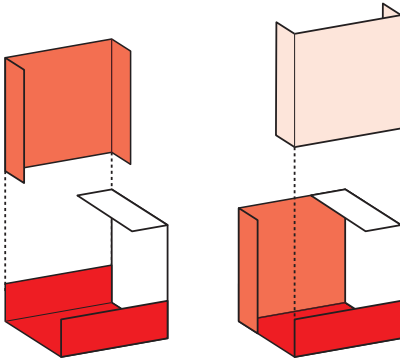
2. Fold the flaps down.



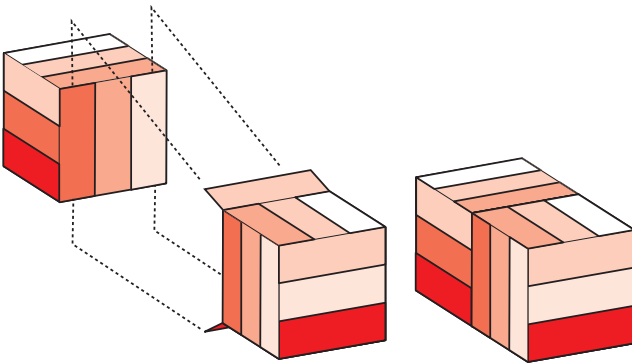
3. Separate the cards. Make six for each cube.



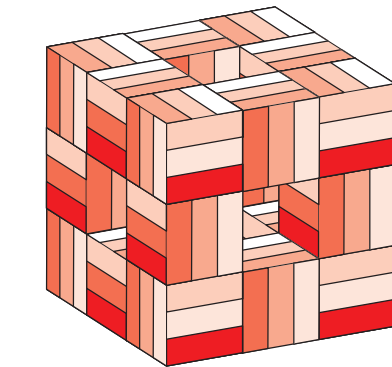
4. Assemble the cards so all the flaps are on the outside.



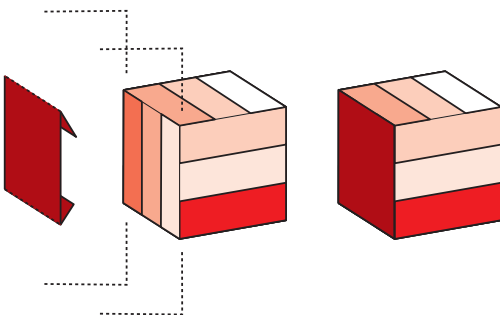
5. The completed cube.



6. To link two cubes together, first insert a flap from one cube behind two flaps on an adjacent cube. Then insert the matching flap from the first cube under the opposite end of the two flaps on the second cube.



7. A level one Menger's Sponge is made from 20 cubes (120 cards) and 72 additional covering cards.



8. You can cover the exposed flaps with extra cards.