

# Belmont Park

Saturday, May 19

# INSTANT REPLAY

Approx Post 2:11... EXACTA & TRIFECTA Wagers this Race. PICK 3 Races (5-7)

MAIDEN, Purse \$42,000. (Up To \$6,148 NY St. OA) For Maiden Three Year Olds And Upward. Three Year Olds 116 lbs., Older Horses 120 lbs. (Non-Claiming) Male \$40,000, Female \$30,000. Three starts preferred. (If the Stewards consider it inadvisable to run this race on the Turf Course it will be run on the Main Track at One Mile and One-Quarter). One Mile and One-Quarter (Inner Turf)

Pgm #	Owner	Trainer	Claiming
1	P.P. 3 John T. Behrendt, et al.	David Donk (7-1-2-0)	
Red 3-1	<b>Slew Micci (L)</b> 122	<b>John R. Velazquez</b> (30-5-3-2)	
	B.c.4 Ski Champ-Mi Alpaca (ARG) by Winter Flower (ARG) Breeder: Bindella, Norberto Pedro E Iriart, ARG (September 17, 1997)	Life: 3 0 2 0 \$11,460 2001: 2 0 2 0 \$1,460 2000: 1 0 0 0 \$0	Turf: 2 0 2 0 \$11,460 Off Trk: 1 0 0 0 \$0 Distance: 0 0 0 0 \$0 Course: 0 0 0 0 \$0
29Apr01	Aqu 9 fm @1 <sub>16</sub> :47 <sup>86</sup> 1:12 <sup>13</sup> 1:43 <sup>65</sup> 3u	Msw 74 79 1 42 <sub>1</sub> 53 <sub>1</sub> 42 2nk Velazquez,J 121 b	*3.05 YrSfr nk, TQerc Champ 1 <sub>1</sub> , RdCrpt 2 <sub>1</sub> bumped upper stretch 10
05Apr01	Hia 8 fm @5 <sub>1</sub> :1:05 <sup>98</sup> 3u	Msw 0 68 4 5 41 <sub>1</sub> 3 <sub>3</sub> 31 <sub>1</sub> 22 <sub>1</sub> Douglas,R 122 b	4.80 AcsAg 2 <sub>1</sub> , 70CrChmp 2 <sub>1</sub> , PckHPrz(dq)10) 2 angled in start 10
07Jun00	Bel 9 gd 1 :48 <sup>18</sup> 1:13 <sup>25</sup> 1:37 <sup>93</sup> 3u	Msw 56 65 1 67 <sub>1</sub> 63 <sub>1</sub> 64 <sub>1</sub> 69 <sub>1</sub> 61 <sub>1</sub> Bridgmohan,S 118 b	33.25 Intm 1 <sub>1</sub> , 7 <sub>1</sub> , HghstMtn 1 <sub>1</sub> , Hndc 3 <sub>1</sub> bothered start, steady 8
Workout(s):	22Apr01 Bel Tr. 4f ft :48 <sup>1</sup> b 6/23	22Mar01 GP 5f yld 1:03 <sup>4</sup> b(d) 3/7	15Mar01 GP 5f ft 1:02 <sup>4</sup> b 7/11

Pgm #	Owner	Trainer	Claiming
1a	P.P. 16 John T. Behrendt, et al.	David Donk (7-1-2-0)	
Red 3-1	<b>Meaningless</b> 122	<b>John R. Velazquez</b> (30-5-3-2)	
	Dk.B./Br.g.4 Gem Master-Bordcda (ARG) by Ahmad (ARG) Breeder: El Manzanar, ARG (September 10, 1997)	Life: 1 0 0 0 \$0 2001: 1 0 0 0 \$0 2000: 0 0 0 0 \$0	Turf: 0 0 0 0 \$0 Off Trk: 0 0 0 0 \$0 Distance: 0 0 0 0 \$0 Course: 0 0 0 0 \$0
03May01	Aqu 5 ft 1 :46 <sup>40</sup> 1:11 <sup>37</sup> 1:36 <sup>91</sup> 3u	Msw 61 74 3 84 <sub>1</sub> 86 <sub>1</sub> 86 <sub>1</sub> 88 <sub>1</sub> 712 <sub>1</sub> Velazquez,J 121	18.80 It'sbtmny hd, ChrBu nk, Tlmmthcrypt 5 <sub>1</sub> inside trip, tired 8
Workout(s):	27Apr01 Bel 5f ft 1:02 <sup>2</sup> bq 17/20	21Apr01 Bel Tr. 4f ft :52 b 30/32	15Apr01 Bel Tr. 5f ft 1:01 <sup>3</sup> b 4/16

Pgm #	Owner	Trainer	Claiming
2	P.P. 8 Michael Shanley, Steven M. Weiss and Michael J. Ryan	John C. Kimmel (7-1-3-1)	
White 15-1	<b>Stalking Man (L)</b> 116	<b>Heberto Castillo Jr.</b> (20-1-4-3)	
	B.c.3 Quiet American-Subtle Express by Slew o' Gold Breeder: Jamm, Ltd, KY (March 17, 1995)	Life: 3 0 0 0 \$2,520 2001: 1 0 0 0 \$0 2000: 2 0 0 0 \$2,520	Turf: 0 0 0 0 \$0 Off Trk: 0 0 0 0 \$0 Distance: 0 0 0 0 \$0 Course: 0 0 0 0 \$0
13Jan01	Aqu 4 ft @1 <sub>16</sub> :47 <sup>51</sup> 1:12 <sup>30</sup> 1:44 <sup>98</sup> 3	Msw 54 70 9 71 <sub>3</sub> 812 <sub>1</sub> 918 <sub>1</sub> 810 <sub>1</sub> 611 Castillo, Jr.,H 120 L	26.00 MyTwsSons 7 <sub>1</sub> , Explatory 1, Yarbok nk wide trip, no rally 11
08Dec00	Aqu 4 ft @1 <sub>70</sub> :48 <sup>96</sup> 1:14 <sup>93</sup> 1:44 <sup>78</sup> 2	Msw 63 73 2 78 <sub>1</sub> 54 <sub>1</sub> 64 <sub>1</sub> 57 410 <sub>1</sub> Castillo, Jr.,H 121	10.20 Cnfgasion 1 <sub>1</sub> , Prgnics 2 <sub>1</sub> , Giroso 7 <sub>1</sub> mid bid, leveled off 8
12Oct00	Bel 6 ft 1 :47 <sup>19</sup> 1:12 <sup>11</sup> 1:37 <sup>93</sup> 2	Msw 71 66 3 53 <sub>1</sub> 54 58 515 <sub>1</sub> 622 <sub>1</sub> Castillo, Jr.,H 118 b	19.70 PrPrize 3, BcktoLuck 1 <sub>1</sub> , FrstSpar 6 <sub>1</sub> wide, no response 7
Workout(s):	14May01 Bel 5f ft 1:01 <sup>4</sup> b 7/26	07May01 Bel 5f ft 1:01 <sup>3</sup> b 9/22	30Apr01 Bel 5f ft 1:01 <sup>4</sup> h 13/22

ALSO ELIGIBLE - BLUE BOYD may run if any late scratches occur.

Pgm #	Owner	Trainer	Claiming
2b	P.P. 14 Caesar P. Kimmel	John C. Kimmel (7-1-3-1)	
White 15-1	<b>New Paradigm</b> 116	<b>(1) Joe Bravo</b> (30-6-4-6)	
	Dk.B./Br.g.3 Capote-I'm Splendid by Our Native Breeder: Caesar P. Kimmel, KY (April 18, 1998)	Life: 1 0 0 0 \$4,260 2001: 1 0 0 0 \$4,260 2000: 0 0 0 0 \$0	Turf: 1 0 0 0 \$1,260 Off Trk: 0 0 0 0 \$0 Distance: 0 0 0 0 \$0 Course: 0 0 0 0 \$0
25Apr01	Aqu 6 fm @1 <sub>16</sub> :49 <sup>98</sup> 1:15 <sup>48</sup> 1:51 <sup>01</sup> 3u	Msw 57 77 8 87 <sub>1</sub> 89 <sub>1</sub> 79 <sub>1</sub> 66 <sub>1</sub> 55 <sub>1</sub> Bravo,J 115	20.40 FrctStnger 2 <sub>1</sub> , Emimnt nk, Loy nk inside run second turn 10
Workout(s):	15May01 Mth 4f ft :49 <sup>1</sup> b 14/29	09May01 Mth 4f ft :51 <sup>1</sup> b 28/31	17Apr01 Bel Tr. 4f ft :49 b 10/27

PP: Donald Gordon John P. Terranova II



TO WATCH YOUR FAVORITE HORSE WIN AGAIN AND AGAIN FOLLOW THE SIMPLE INSTRUCTIONS ON THE FOLLOWING PAGES

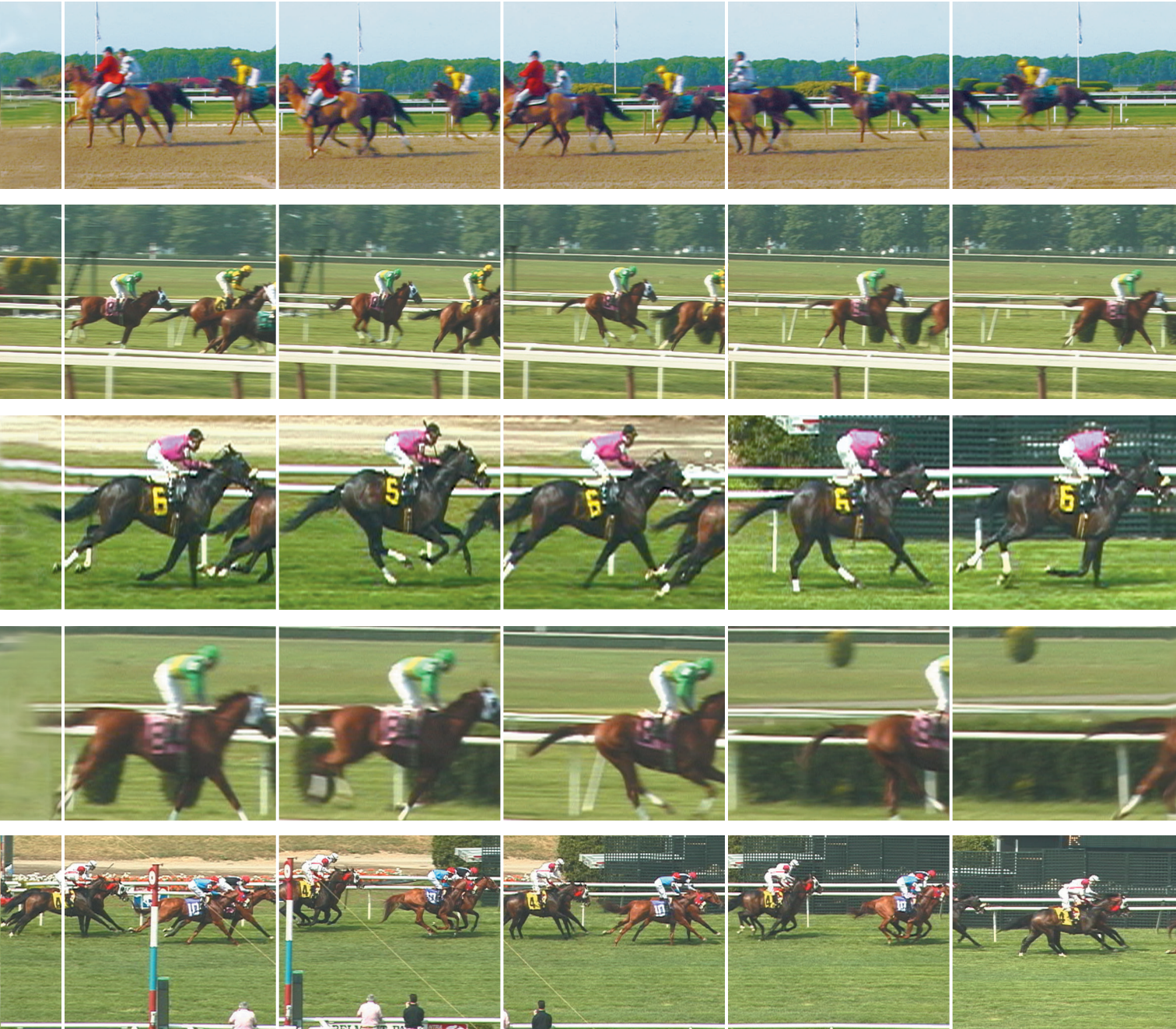
BELMONT



TO VIEW AN

***INSTANT***

H E



**REPLAY** PLACE FILMSTRIP  
R E



# INSTANT

# REPLAY

TO WATCH INSTANT REPLAYS OF THE RACES AT BELMONT PARK, YOU NEED:

A 3" SHEETROCK SCREW

A GLUE STICK OR TAPE

CUT ON -----

FOLD ON .....

1. THE CIRCLE ON THIS PAGE AND THE "PACMAN" SHAPE ON THE FRONT ARE TEMPLATES. CUT THESE FORMS OUT OF A SEPARATE SHEET OF PAPER.

2. CUT THE 5 RACING FILM STRIPS ON THE FACING PAGES AND GLUE THE TWO HALVES TOGETHER SO THAT EACH STRIP HAS 10 FRAMES.

3. CUT OUT THE BLACK AND BLUE FILM STRIP VIEWER AND THE WHITE MARKED SLOTS. GLUE THE ENDS TOGETHER TO FORM A CYLINDER.

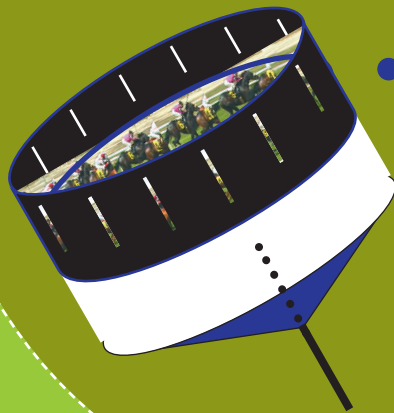
4. USE THE CIRCLE FROM STEP 1 AND GLUE THE TRIANGLES OF THE CYLINDER TO THE UNDERSIDE OF THE CIRCLE TO CREATE A BASE.

5. PLACE SCREW THROUGH THE BLUE CENTER DOT OF THE CIRCLE.

6. TAKE THE "PACMAN" SHAPE TO MAKE A CONE AND ATTACH TO THE BOTTOM OF THE CYLINDER USING THE MARKED TABS.

7. INSERT THE RACE OF YOUR CHOICE AND SPIN THE INSTANT REPLAY VIEWER UNDER A LIGHT. VIEW FILM THROUGH THE SLOTS. VIEWER MAY SPIN MORE EASILY UPSIDE DOWN.

TO PRESERVE FILMSTRIPS CUT CIRCLE AND CONE FROM AN EXTRA SHEET OF PAPER



OVERLAP THIS  
SLOT WITH OUTSIDE  
SLOT ON FRONT  
SHEET AND CUT

OVERLAP THIS  
SLOT WITH INSIDE  
SLOT ON FRONT  
SHEET AND CUT